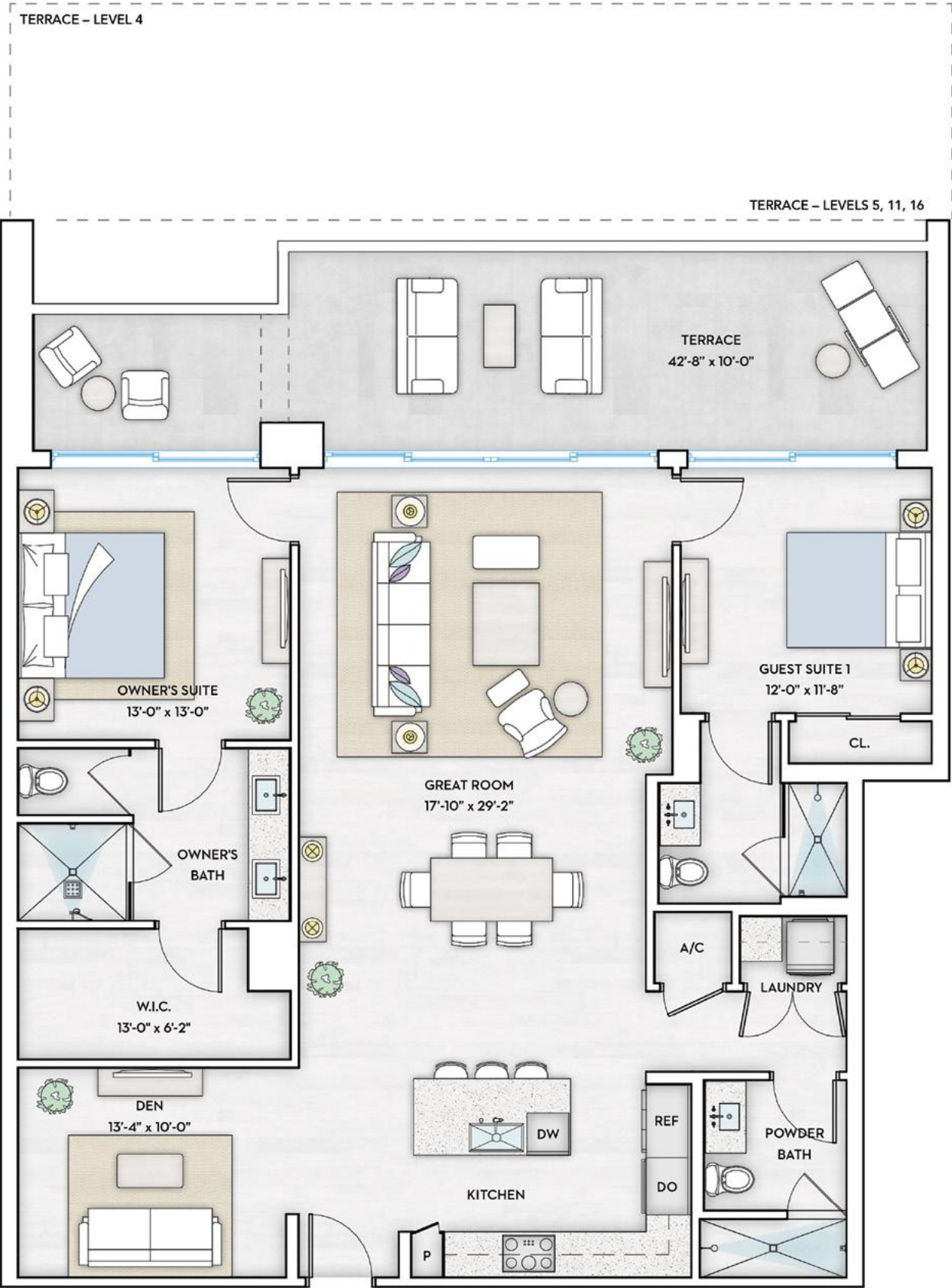


BAY 2 RESIDENCE

2 BEDROOMS + DEN | 3 BATHROOMS
LEVELS 4-17



INTERIOR	TERRACE LEVEL 4	TERRACE LEVEL 5	TERRACE LEVELS 6-10, 17	TERRACE LEVELS 11, 16	TERRACE LEVELS 12-14, 15
1,664 SQ FT	943 SQ FT	469 SQ FT	391 SQ FT	482 SQ FT	400 SQ FT
Total	2,607 SQ FT	2,133 SQ FT	2,055 SQ FT	2,146 SQ FT	2,064 SQ FT

ORAL REPRESENTATIONS CANNOT BE RELIED UPON AS CORRECTLY STATING THE REPRESENTATIONS OF THE DEVELOPER. FOR CORRECT REPRESENTATIONS, MAKE REFERENCE TO THIS BROCHURE AND TO THE DOCUMENTS REQUIRED BY SECTION 718.503, FLORIDA STATUTES, TO BE FURNISHED BY A DEVELOPER TO A BUYER OR LESSEE. These materials are not intended to be an offer to sell, or solicitation to buy a unit in the condominium. Such an offering shall only be made pursuant to the prospectus (offering circular) for the condominium and no statements should be relied upon unless made in the prospectus or in the applicable purchase agreement. In no event shall any solicitation, offer or sale of a unit in the condominium be made in, or to residents of, any state or country in which such activity would be unlawful. Stated dimensions are measured to the interior boundaries of the interior walls. For your reference, the area of the Unit, determined in accordance with those defined unit boundaries, is set forth on Exhibit 3 to the Declaration. Note that measurements of rooms set forth on this floor plan are generally taken at the greatest points of each given room (as if the room were a perfect rectangle), without regard for any cutouts. Accordingly, the area of the actual room will typically be smaller than the product obtained by multiplying the stated length times width. All dimensions are approximate and may vary with actual construction, and all floor plans and development plans are subject to change.



1000
-BOULEVARD OF THE-
ARTS

